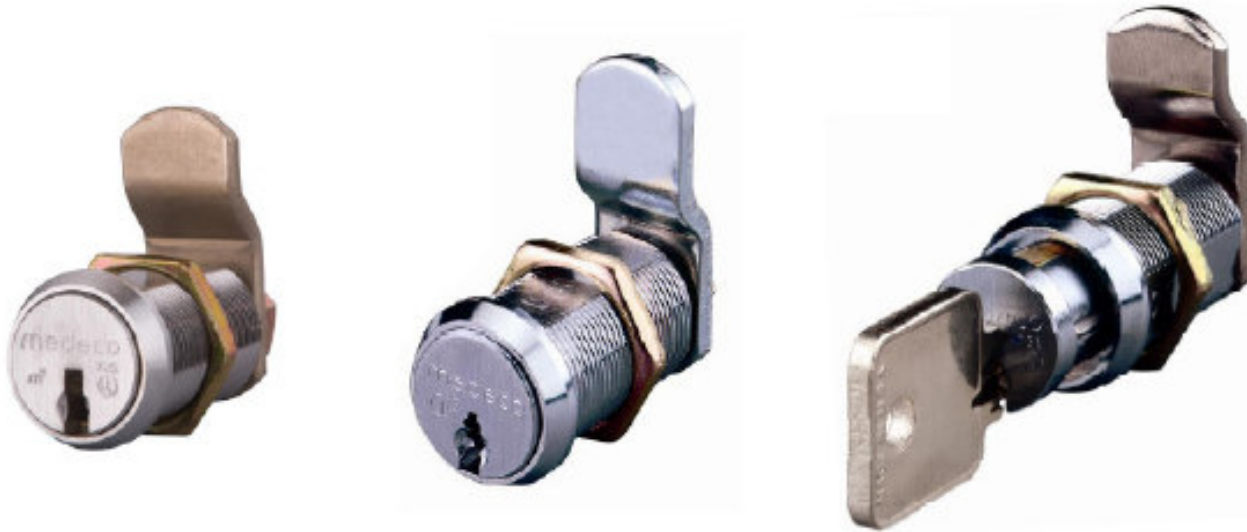


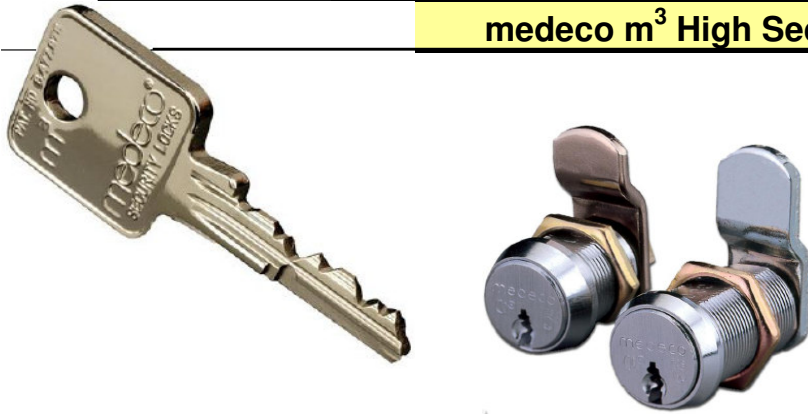
CHARNLEY
SECURITY • SERVICES
Medeco³



cam locks

www.m3arx.co.uk – info@charnley.plus.com

medeco m³ High Security camlocks

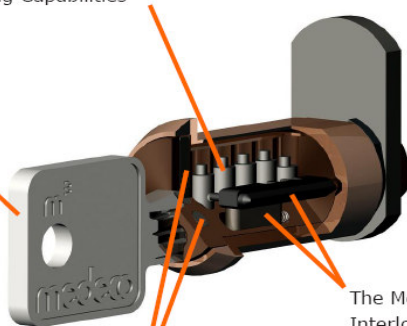


The m3 Camlock ranges from Medeco are world renowned and available in a wide variety of sizes and functions to meet your specific needs. Locks can be keyed differently, keyed alike, or master keyed.

Inside View

High Security Pins Provide Pick Resistance and Extensive Keying Capabilities

Stronger key for lasting durability



The Medeco³ Side Bar and Slider Interlock to Provide Added Strength and Security

Hardened Inserts Protect Against Drilling

m³ Patent Protection and Physical Strength

The Unique design provides a triple locking action, making the locks virtually pick proof. All m³ camlocks and keys are protected under Patent and Trademark Laws.

CHARNLEY
SECURITY • SERVICES



High Security Camlocks

m³ High Security camlocks are designed for applications which require the highest level of protection against physical attack. Being machined from solid brass, with hardened inserts at strategic points, to protect against drilling, prying and other types of forced entry



Security Camlocks

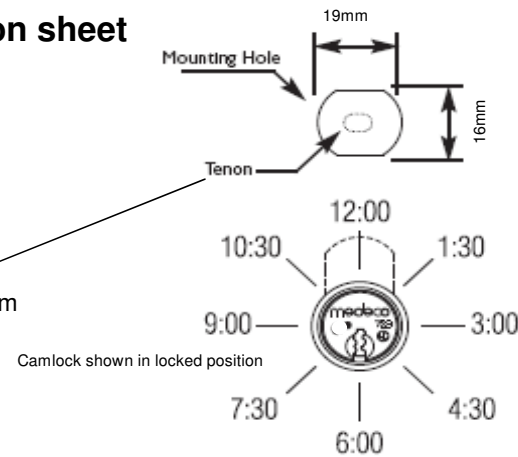
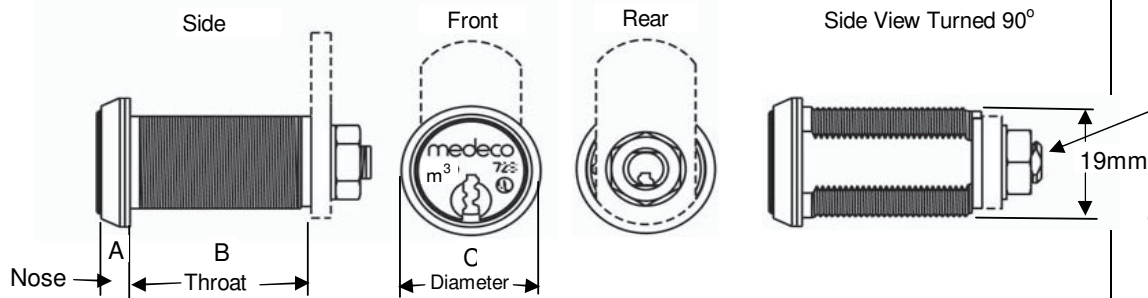
m³ Security Camlocks are similar to the High Security types; again being machined from solid brass to offer durability and lasting performance, at a lower cost. This range of locks offer the same high security operating design without the added cost of drill-resistant features. This makes them ideal for applications where key control and durability are needed but the threat of extreme physical attack is low

Removable Core Camlocks

m³ Camlocks are also available with a Removable core feature. This allows the core of the lock to be changed quickly, providing an entirely new combination. They provide the facility to swap out where immediate action is required when keys are lost or stolen.



medeco m³ camlock explanation sheet



Part #	# of pins	Nose (A)	Throat (B)	Diameter [C]	Part #	Direction	Travel	Locked	Unlocked	Key Pull
250T	5	11mm	18mm	25mm	219	Clockwise	90°	6:00	9:00	1
350T	5	8mm	22mm	22mm	239	Anti-clockwise	90°	6:00	3:00	1
450T	5	5mm	25mm	22mm	259	Clockwise	180°	6:00	12:00	1
550T	4	5mm	22mm	22mm	269	Clockwise	180°	6:00	12:00	2
650T	5	8mm	29mm	22mm	279	Anti-clockwise	180°	6:00	12:00	1
750T	4	8mm	18mm	22mm	289	Anti-clockwise	180°	6:00	12:00	2
850T	4	10mm	16mm	22mm						
950T	5	10mm	19mm	22mm						
1150T	5	13mm	16mm	25mm						
1450T	5	5mm	38mm	22mm						
1452T	5	8mm	50mm	22mm						
7155	4	16mm	18mm	25mm						
7255	4	11mm	22mm	25mm						
7355	4	5mm	29mm	22mm						
7455	5	10mm	29mm	22mm						
7555	5	16mm	22mm	25mm						

This section show the alternative key rotation and pull configurations available

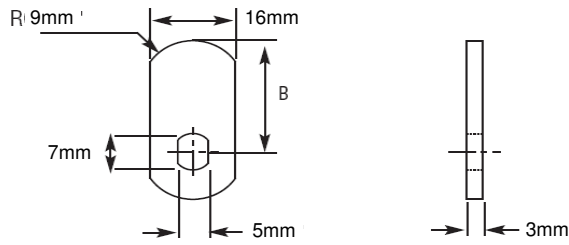
There are many more options to the camlock range; shown here are the most common ones; pleas ask for details if you don't see here what you require

This chart shows the number of pins [4 or 5] and different section sizes available

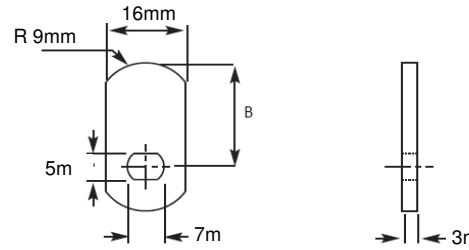
Example

60T - 250 - 269 - FH

medeco m³ flat cams for 19mm double D camlocks



**A Series Flat Cams
Vertical Tenon**



**D Series Flat Cams
Horizontal Tenon**

Seen opposite are two flat cam piece families; the mounting holes are different [Tenons] by 90° to each other

A

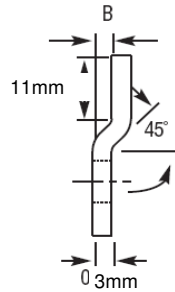
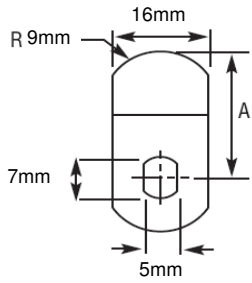
Part #	Length [B]
CT-A00	16mm
CT-A01	19mm
CT-A02	22mm
CT-A03	25mm
CT-A04	28mm
CT-A05	32mm
CT-A06	35mm
CT-A07	38mm
CTA-08	41mm
CT-A09	44mm
CT-A11	50mm
CT-A12	54mm
CT-A13	57mm
CT-A14	60mm
CT-A15	63mm
CT-A16	66mm
CT-A19	75mm

D

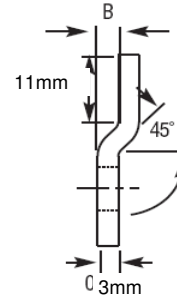
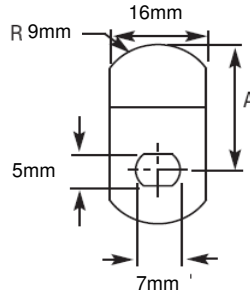
Part #	Length [B]
CT-D00	16mm
CT-D01	19mm
CT-D02	22mm
CT-D03	25mm
CT-D04	28mm
CT-D05	32mm
CT-D06	35mm
CT-D07	38mm
CT-D08	41mm
CT-D09	44mm
CT-D11	50mm
CT-D12	54mm
CT-D15	63mm
CT-D19	75mm

These parts can be added to complete a camlock specification or ordered separately to be held in stock

medeco m³ Offset cams for 19mm double D camlocks

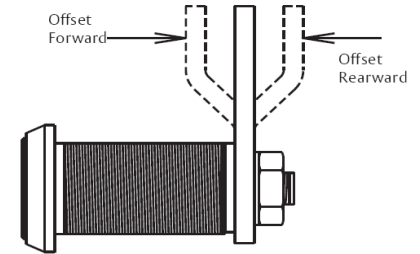


**A Series Offset Cams
Vertical Tenon**



**D Series Offset Cams
Horizontal Tenon**

Seen opposite are two offset [cranked] cam piece families; the mounting holes are different [Tenons] by 90° to each other



These parts can be added to complete a camlock specification or ordered separately to be held in stock

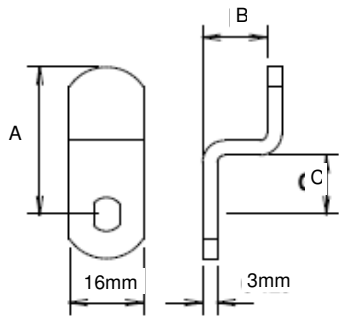
H

Part #	Length [A]	Offset [B]
CT-H27	22mm	4mm
CT-H09	28mm	3mm
CT-H07	28mm	5mm
CT-H16	28mm	8mm
CT-H00	32mm	3mm
CT-H15	32mm	5mm
CT-H17	32mm	8mm
CT-H14	38mm	5mm
CT-H32	38mm	8mm
CT-H30	44mm	5mm
CT-H19	44mm	8mm
CT-H20	50mm	8mm
CT-H28	28mm	4mm
CT-H33	38mm	3mm
CT-H34	38mm	4mm
CT-H11	44mm	3mm
CT-H06	44mm	4mm
CT-H12	50mm	3mm
CT-H05	50mm	4mm
CT-H25	50mm	5mm

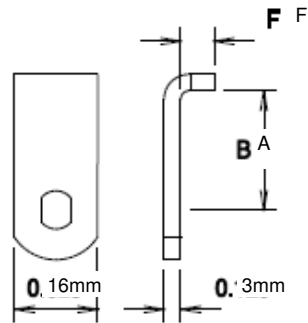
J

Part #	Length [A]	Offset [B]
CT-J29	22mm	4mm
CT-J05	25mm	3mm
CT-J22	28mm	4mm
CT-J01	28mm	5mm
CT-J13	28mm	8mm
CT-J07	32mm	3mm
CT-J12	32mm	5mm
CT-J14	32mm	8mm
CT-J27	38mm	8mm
CT-J06	28mm	3mm
CT-J04	38mm	3mm
CT-J30	38mm	5mm
CT-J09	44mm	3mm
CT-J28	66mm	5mm
CT-J24	44mm	4mm
CT-J20	44mm	5mm
CT-J16	44mm	8mm
CT-J10	50mm	3mm
CT-J26	50mm	5mm
CT-J17	50mm	8mm

medeco m³ Offset & Bent cams for 19mm double D camlocks



**Offset
G**



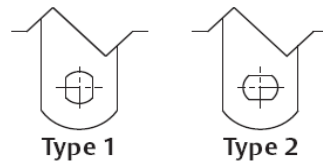
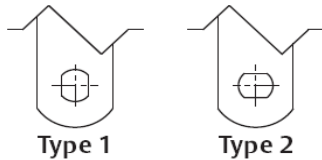
**Bent
K**

Seen opposite are two Groups of cam piece families; Bent offset and bent. The mounting holes are different [Tenons] by 90° to each other and on this sheet are referred to as Type 1 and Type 2

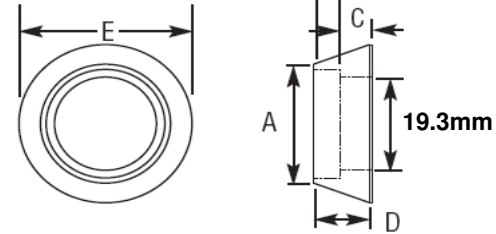
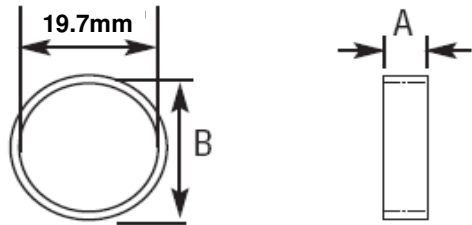
Part #	Length [A]	Offset [B]	To Bend [C]	Type
CT-G02	19mm	25mm	6mm	1
CT-G05	21mm	17mm	10mm	1
CT-G09	22mm	8mm	11mm	1
CT-G51	22mm	8mm	11mm	2
CT-G07	22mm	13mm	10mm	1
CT-G55	28mm	11mm	11mm	2
CT-G11	28mm	11mm	13mm	1
CT-G03	32mm	14mm	13mm	1
CT-G04	35mm	14mm	19mm	1
CT-G06	38mm	13mm	14mm	1
CT-G56	38mm	13mm	14mm	2
CT-G01	38mm	14mm	19mm	1
CT-G53	38mm	14mm	19mm	2
CT-G08	38mm	14mm	14mm	1
CT-G57	41mm	11mm	11mm	2

Part #	Length [A]	Offset [B]	Type
CT-K13	11mm	15mm	1
CT-K12	12mm	6mm	1
CT-K02	18mm	10mm	1
CT-K05	19mm	16mm	1
CT-K10	22mm	6mm	1
CT-K14	23mm	6mm	1
CT-K01	24mm	10mm	1
CT-K07	32mm	7mm	1
CT-K08	33mm	15mm	1
CT-K11	33mm	15mm	2
CT-K00	38mm	15mm	1
CT-K06	40mm	6mm	2

These parts can be added to complete a camlock specification or ordered separately to be held in stock



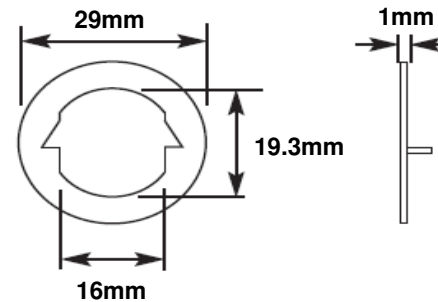
medeco m³ Spacer Rings and Security Collars for 19mm double D camlocks



Spacer rings		
Part #	Thickness [A]	Diameter [B]
CP-160051	3mm	22mm
CP-160101	3.5mm	22mm
CP-160071	4.8mm	22mm
CP-160111	5mm	22mm
CP-160081	6.3mm	22mm
CP-160091	7mm	22mm
CP-160301	9.5mm	22mm
CP-160121	10mm	22mm
CP-160061	13.5mm	22mm
CP-160271	11mm	22mm
CP-160541	0.8mm	22mm
CP-160551	1.6mm	22mm
CP-160571	8mm	22mm
CP-160591	1.6mm	25mm
CP-160601	3mm	25mm
CP-160611	6.3mm	25mm

Security Collars					
Part #	A	B	C	D	E
CP-070501	25mm	3.6mm	4.3mm	7.9mm	32.8mm
CP-070131	22.5mm	3.6mm	4.3mm	7.9mm	31mm
CP-070161	22.5mm	4.8mm	6.3mm	11mm	34.4mm
CP-070171	22.5mm	5mm	6mm	11mm	32.8mm
CP-070441	22.5mm	6.6mm	1.8mm	8.4mm	31mm
CP-070201	22.5mm	6.7mm	1.3mm	8mm	31mm
CP-070111	22.5mm	7mm	4mm	11mm	32.8mm
CP-070141	22.5mm	8.3mm	1.2mm	9.5mm	32.4mm
CP-070181	25mm	11.4mm	1.2mm	12.7mm	32mm
CP-070481	25mm	16.2mm	1.2mm	17.5mm	33.4mm

Fixing Washer



For use on Timber doors